

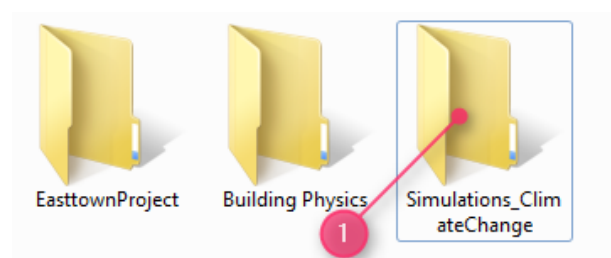
ENVI-met V4.4 Quickstart

Getting started: Register a Workspace

With Version 4, ENVI-met allows you to organize your projects in (several) workspaces.

A workspace itself is nothing else but a folder on your computer which can contain one or more projects.

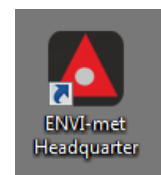
First of all, you need of course a folder on your drive which will store your ENVI-met simulation files



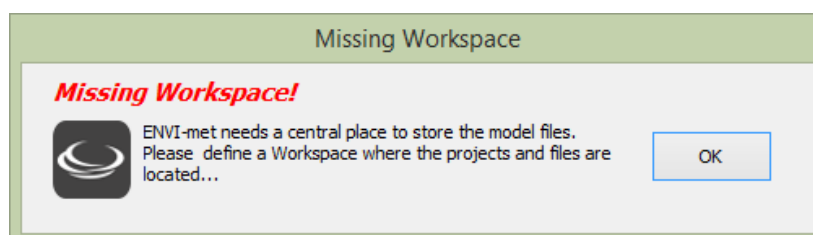
Say, this is the folder “Simulations_ClimateChange” which is located here on drive D:

We will now promote this folder to be your **Workspace** for ENVI-met. A workspace is not a project, but will be the home location for the projects we will create.

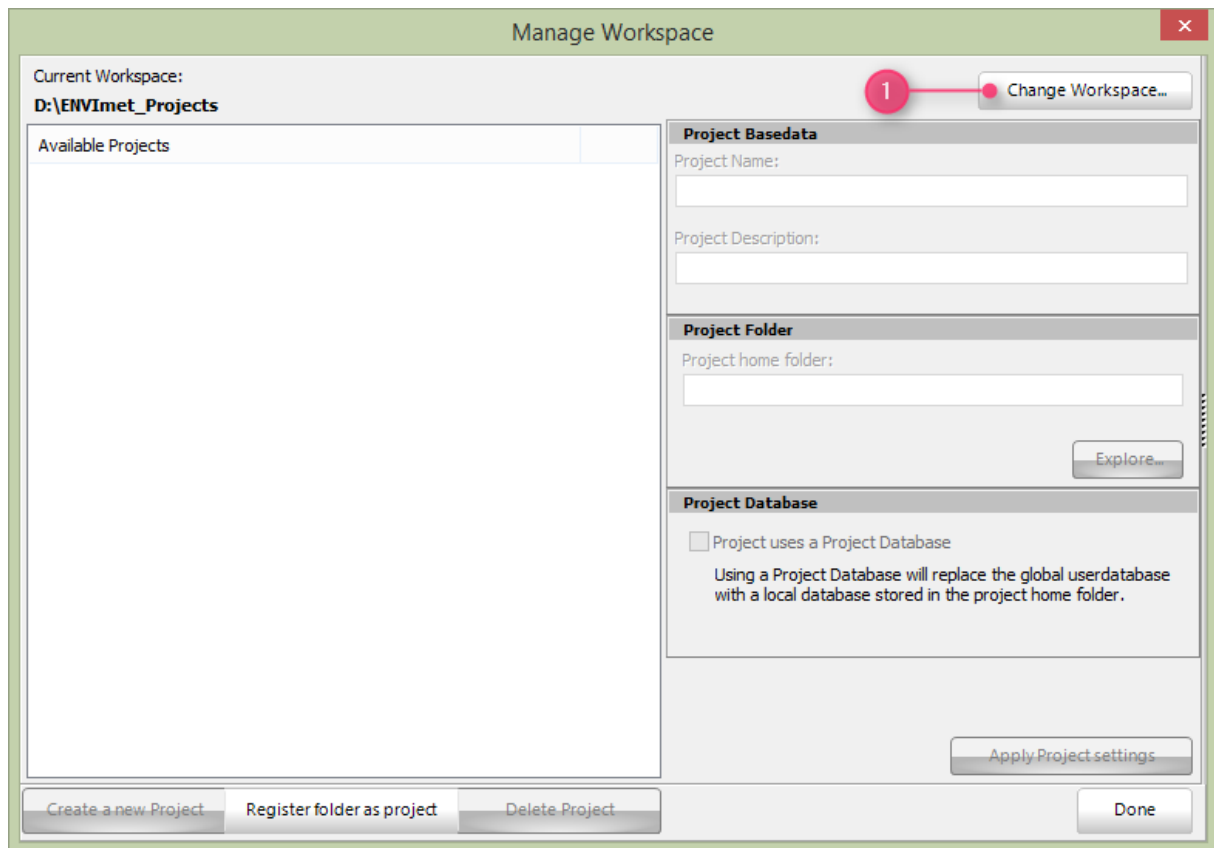
To make our folder a workspace, we will start the ENVI-met Headquarter:



In a fresh installation, there are no workspaces defined and ENVI-met will complain:



Press OK to enter the Workspace-Manager where you can select a folder to use:



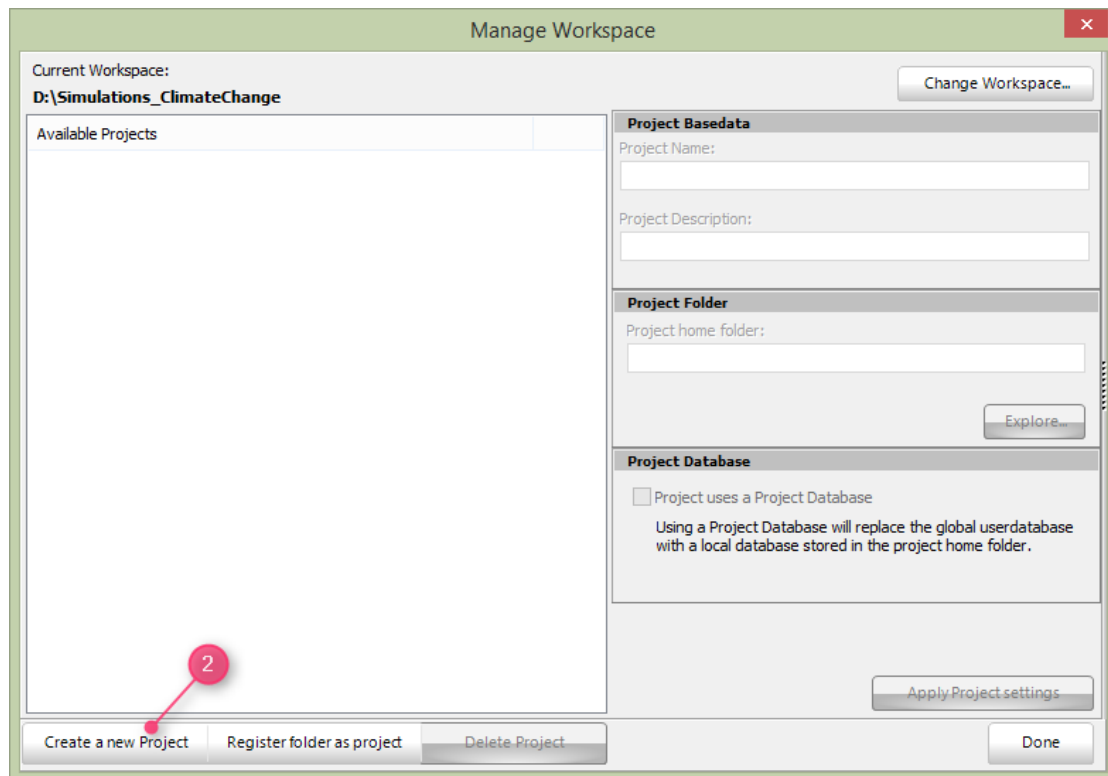
Press “Change Workspace...” and select the new workspace folder
d:\SimulationsClimateChange (or your own destination)

Now your first workspace is ready to host ENVI-met projects.

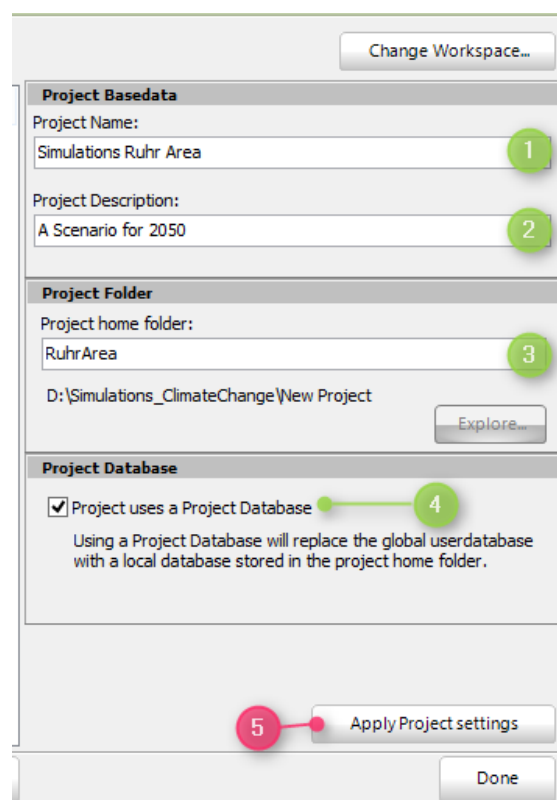
If you have several workspaces, you can switch between them in the same way, but there is always just one Workspace active at the same time.

Adding a project

We now do have a workspace, but it is still empty, so let us create a new project inside the workspace. This is done in the same spot where we just have registered our workspace.



Just press “Create a new Project” (2). This will create a “new Project” entry in the “Available Projects” list.



Next, we need to modify the blank and default settings for our new project:

1. **Project Name** is the given name for the project under which it will be listed in all applications
2. **Project Description** is a short description text for your information
3. **Project home folder**: This is the folder in which your project will be hosted. The name of the folder is always relative to the selected Workspace. Basically, the project home folder is an ordinary folder which can hold any kind of data, not only ENVI-met files
4. **Project uses own database**: From Version V4, all data are stored in a large database replacing the formerly used single files. If you wish to use an own user database for the project instead of the global user database, you have to tick this option. For more information see the online documentation

Finally, press “ApplyProject Settings” (5) to register your changes. If the folder doesn’t exist, you will be asked if a new folder should be created.

Important: ENVI-met will not touch the content of the project folders. Even if you select “Delete Project”, only a small system file will be removed, but the folder itself will not be touched.

That’s it. You have **registered a Workspace** and you have **created a first Project** within. Now you can leave the dialog and go back to the desktop.

Create your own simulation

The next steps will include to generate your own Area Input File (.INX) and Simulation File (.SIMX).

For the different steps, we have created video tutorials available at: <https://www.envi-met.com/learn/>