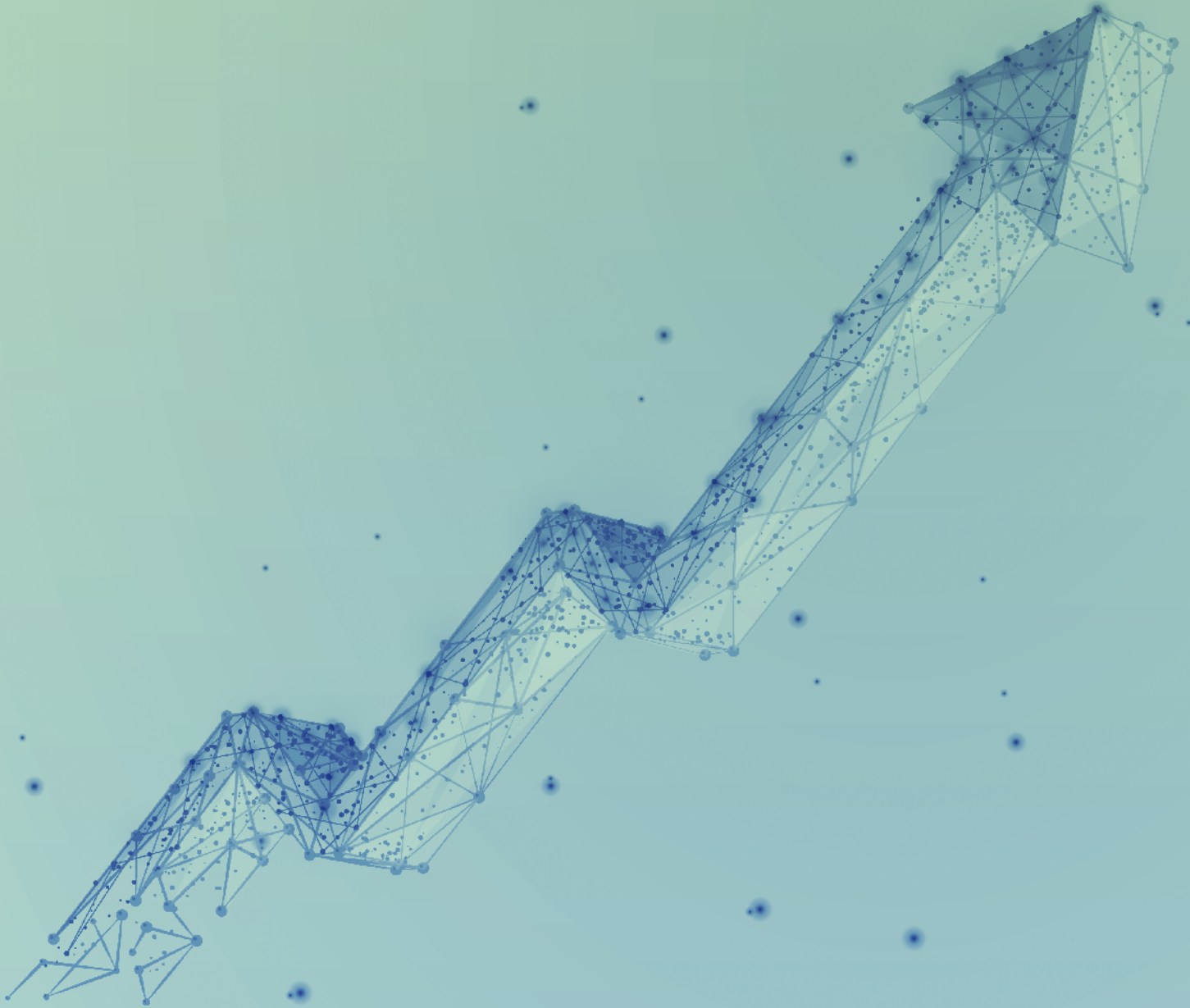


**ENVI
_MET**



ENVI-met
QUICKSTART

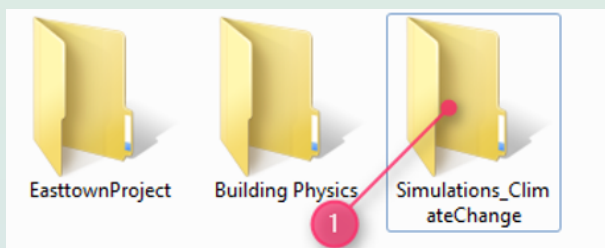
Getting started: Register a Workspace

ENVI-met allows you to organize your projects within Workspaces.

A Workspace itself is nothing else but a folder on your computer which can contain one or more projects.

1

First of all, you need a folder on your drive which will store your ENVI-met simulation files



Say, this is the folder “Simulations_ClimateChange” which is located here on drive D:

2

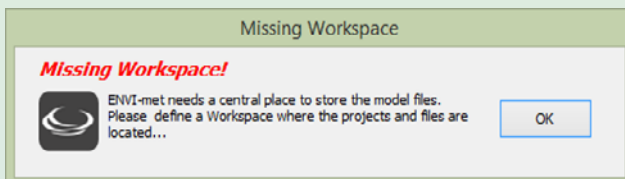
We will now make this folder your Workspace for ENVI-met. A Workspace is not a project, but will be the home location for the projects we will create.

To make our folder a Workspace, we will start the **ENVI-met Headquarter**:

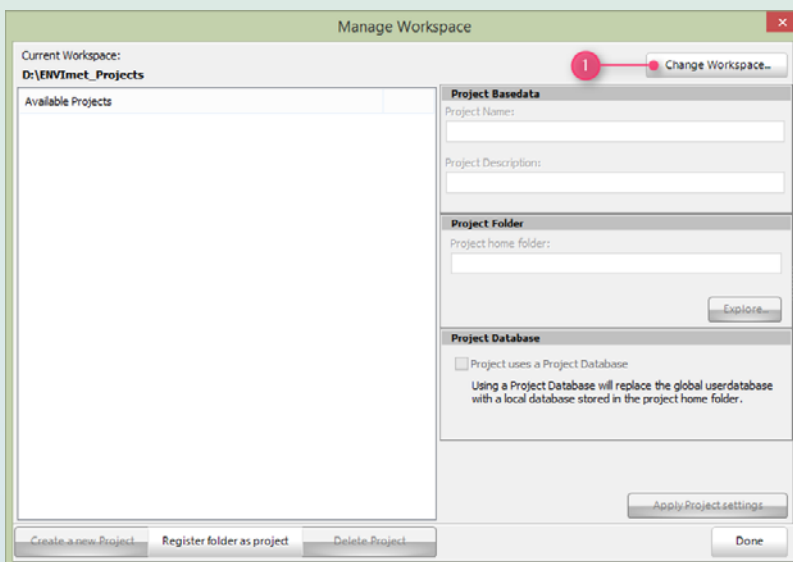


3

In a fresh installation, there are no Workspaces defined and ENVI-met will let you know:



Press OK to enter the Workspace Manager where you can select a folder to use:



Press "Change Workspace..." and select the new Workspace folder
D:\SimulationsClimateChange
(or your own destination)

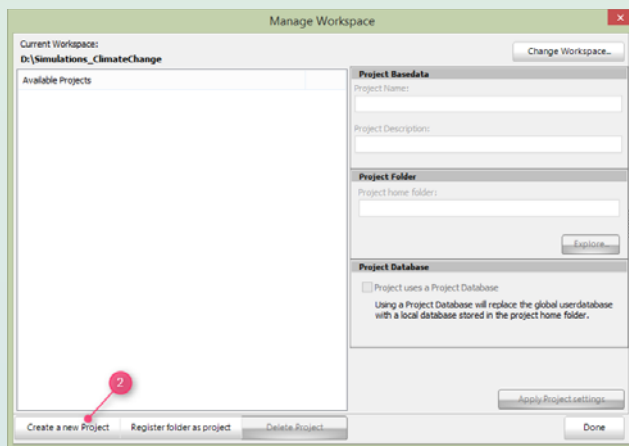
Now your first Workspace is ready to host ENVI-met projects.

Adding a project

We now have a workspace, but it is still empty, so let us create a new project inside the workspace. This is done in the same spot where we just have registered our workspace.

1

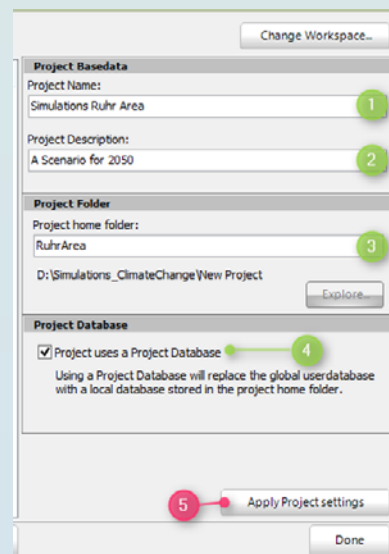
Just press "Create a new Project" (2). This will create a "new Project" entry in the "Available Projects" list.



2

Next, we need to modify the blank and default settings for our new project:

1. **Project Name** is the given name for the project under which it will be listed in all applications
2. **Project Description** is a short description text for your information
3. **Project home folder:** This is the folder in which your project will be hosted. The name of the folder is always relative to the selected Workspace. Basically, the project home folder is an ordinary folder which can hold any kind of data, not only ENVI-met files
4. **Project uses own database:** From Version V4, all data are stored in a large database replacing the formerly used single files. If you wish to use your own user database for the project instead of the global user database, you have to tick this option. For more information see the online documentation



Finally, press “ApplyProject Settings” (5) to register your changes. If the folder doesn’t exist, you will be asked if a new folder should be created.

IMPORTANT:

ENVI-met will not alter the content of the project folders. Even if you select “Delete Project”, only a small system file will be removed, but the folder itself will not be touched.

That’s it. You have **registered a Workspace** and you have **created a first Project** within. Now you can leave the dialog and go back to the desktop.

Create your own simulation

The next steps will include to generate your own Area Input File (.INX) and Simulation File (.SIMX).

For the different steps, we have created video tutorials available at:

<https://www.envi-met.com/learn/>